



AVON | WEST
STRATFORD

The Rhodes

Square Footage: 2,000

Bedrooms: 3

Bathrooms: 2.5

Stores: 2

Lot Width: 61 ft.

3 Bedroom, 2 storey, oversized single car garage, 2 1/2 baths, large open concept main floor, oversized master c/w oversized walkin closets and ensuite, second floor laundry.

**Bromberg
Homes**

Division of Werner Bromberg Ltd.

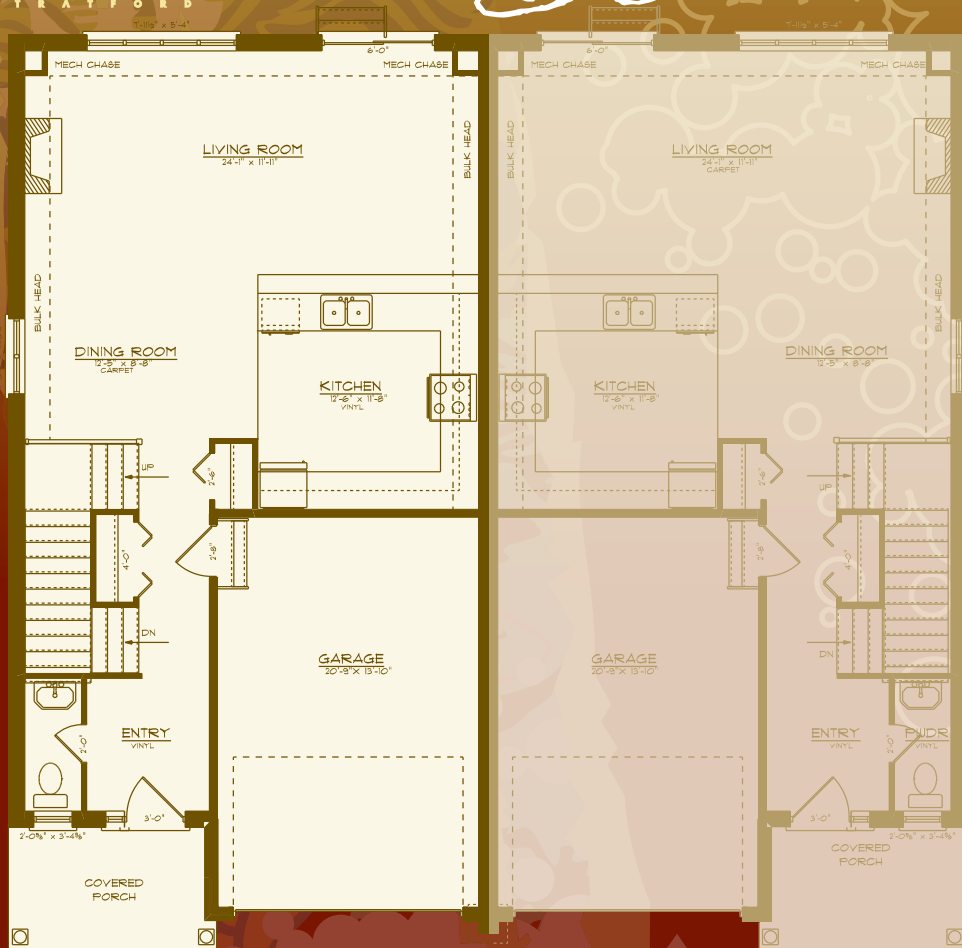




The Rhodes

2,000 sq. ft.

AVON | WEST
STRATFORD



Rhodes
Main Floor 853 Sq. Ft.

Wilcox
Main Floor



Rhodes
Upper Floor 1,147 Sq. Ft.

Wilcox
Upper Floor



Division of Werner Bromberg Ltd.

All drawings are artist concepts of the final product and may be revised and/or improved as necessitated by Architectural controls. All floor plans are approximate dimensions. Floor areas shown include "open to below" but do not include garage or basement areas. E. & O. E.

www.bromberghomes.com